

The Wildlife Society

Western Section

President's Message

Natasha Dvorak

Happy Spring! Field season is underway, and I hope you are all enjoying some quality outdoor time. The 2014 Annual Meeting is behind us, and planning for the 2015 meeting in Santa Rosa is already underway. As always, post-conference member survey results will guide the planning, and if you feel very strongly about something speak up, or better yet, get involved! We all have careers, families, research interests, and the like, but it's so important to improve the profession by lending your experience and skills to the Section. The Reno meeting was just 6 registrants short of record attendance, at 586 registered attendees. The Nevada crowd was appreciative of a venue in their state, though it presented travel difficulties for some California members in this rough economy. We tried a new breakfast roundtable event that attendees unanimously (in my round table session) said they would attend again next year. While some of you reported not attending the plenary because it wasn't relevant to your job, others expressed newfound appreciation for the role that citizen science can play in wildlife conservation. Numerous outspoken members were disappointed that the keynote panel did not include a woman, although the panel was still an impressive lineup of top agency directors in Nevada and California. The banquet was well-attended with 302 dinners served; shared member stories received a lukewarm reception but, there was applause all around for Reginald Barrett and Marshall White, the last two standing when the audience was asked to participate in a "remain standing if you have attended 1, 5, 10, 15, 20, 25+ Western Section meetings" contest! Congrats Reg and Marshall.

(Dvorak, cont'd on page 2)



In This Issue:

Executive Board Reports.....	1-7
Annual Meeting Update.....	8-12
Committee Reports.....	13-15
Chapter Reports.....	16-18
Announcements.....	19-22
Contact Information.....	23

(Dvorak, cont'd from page 1)

Look for responses to all those great plenary questions in the next Summer newsletter, and remember that SFSU's Dr. Gretchen LeBuhn could use your help conserving pollinators by participating in The Great Sunflower Project: www.greatsunflower.org; avian ecology is enhanced by your reports to Cornell University Lab of Ornithology's eBird program (Tina Phillips and the birds thank you): www.ebird.org; and you can benefit wildlife (and UC Davis' Dr. Fraser Shilling and the Road Ecology Center) by reporting your roadkill observations to the California Roadkill Observation System: www.wildlifecrossing.net.

The Board will be working hard this year to implement key portions of the Strategic Plan. Still in draft form, a hard copy was circulated around the Annual Meeting, particularly at Chapter meetings, and will be circulated more broadly as it is refined. The Section's membership is growing and our collective profession is becoming more complicated; the Section continues to evolve to best serve our members, and yet the needs are straining the availability and skills of our volunteer base. Thus, the Section needs to make wise choices to advance our professional organization, strategically paying for contract services when we need them without jeopardizing our financial position. So if you are feeling a call to volunteerism, the Section may need you now more than ever, especially if you have other nonprofit experience, technology experience with broad-based, multi-purpose communications platforms, and a general penchant for turning great ideas into measurable results.



Marshall White (left) and Reginald Barrett (right)

The last two standing when the banquet audience was asked to participate in a “remain standing if you have attended 1, 5, 10, 15, 20, 25+ Western Section meetings” contest! Photo by Janine Payne Schneir.

President-Elect Message

Don Yasuda



I am honored that you have bestowed upon me the responsibility of serving as your President-Elect. I look forward to continuing my service to the Section and to you. I find it hard to believe that it's been 14 years since I first became involved with the Section Executive Board. I have seen quite a bit of change in that time, but the one constant is the dedication and commitment of those that serve on your Executive Board. Every spring, I get excited to meet and work with the new Board members and catch up with those more "seasoned" Board members. It is especially true this year as we're continuing our efforts to improve the operations of the Board meetings to make them more efficient and allow us to develop and provide more and better member services. We want to make serving on the Board not only more meaningful and rewarding to the Officers, Chapter Representatives and Committee Chairs, but also to make meetings fun again. As volunteers, your Board members

add several in-person meetings on weekends, keeping up with email discussions and voting, and completing action items and reporting on progress in newsletters on top of their regular jobs or school and their busy lives. So making the meetings fun and rewarding is important to me, but more importantly, it's essential to helping the Section continue to grow.

I have other ideas on improving Section operations, but that will have to wait a bit as my primary focus this year is, of course, planning for the Annual Conference to be held in Santa Rosa January 28-30, 2015. Put it on your calendar! The pressure is on given the high caliber conference we just had in Reno with near record attendance and an impressive program. I have lots of ideas on a theme that I'll share soon but I'm putting you all on notice that I will be requesting your help. Our conferences have just been getting better and better over the years, in response to sugges-

tions by members and with the help of very dedicated member volunteers and tremendously hard working conference support contractors. I will work hard to continue the best traditions of our conference and maybe introduce a few new aspects in furthering our efforts to continually adapt to meet member needs. One job at the conference that I know will need new leadership is audio-visual captain. Since 2000, I think this will be only the third time I won't be able to take care of all of the AV setup. I am also looking for more opportunities to establish or re-establish committees to help with conference planning. I know many of you have great ideas that can improve our conferences and I want to make it easy for you to contribute. Please contact me if you'd like to get involved or have ideas for the conference and once again, don't forget to mark the dates in your calendar.

Past-President

Douglas E. Bell

Change is good, as they say. I was very pleased to pass the baton for the presidency of The Western Section into the extremely capable hands of Natasha Dvorak at our annual meeting in Reno last January. Already, Natasha has brought fresh approaches and changes to the Section, as were evident in the diverse program she created for our annual meeting. Please join me in congratulating Natasha for the superb work she did in crafting a meeting that was enjoyed by all. Not only that, somehow she must have known that a pair of peregrines would delight us by perching almost every morning on the Grand Sierra Resort. Thanks, Natasha!

Although change is good, change with continuity is better. Thanks to our dedicated Board Members and Staff, we have a system in place that eases the transition between officers, especially the presidency. Hearing the stories about how much the Western Section

President had to do in the past always sent shudders down my spine. Of course, the President still has plenty on her or his plate, but at least with our contract staff, Mike Chapel (Accountant), Cynthia Perrine (Program Director), Candace Renger (Project Manager) and Eric Renger (Webmaster), a huge amount of detail is taken care of that would otherwise require countless hours of attention by the President. The Elected Officers, Appointed Officers, Committee Chairs and Chapter Representatives round-out the structure of The Western Section and allow us to move forward on many levels as an efficient organization. Speaking of which, we will continue to move forward on finalizing our Strategic Plan and then move towards implementing it with an Operations Plan. There will be plenty of opportunity

for our membership to direct where we go and what to emphasize. I would encourage all of you to join in the discussion. I will do my best to work with our Board on hopefully finalizing this planning process.

It is not too early to begin thinking about nominations for our next President. Our current President-Elect, Don Yasuda will be taking over the helm as President in 2015 and we will need to find a successor. If you have anyone you would like to nominate, please feel free to contact me, as it is the role of the Past-President to shepherd along this “change with continuity”.



Doug Bell with wounded red-tailed hawk. Altamont Pass Wind Resource Area. March 7, 2014.

Photo by Jamie Kneitel.

(Bell, cont'd on page 7)

A Note from the Treasurer

John McNerney



Planning for Wolves in California: Cattle and Deer and Wolves, Oh My!

On December 28, 2011, a young male gray wolf (*Canis lupus*) crossed into California from Oregon. This wolf's (OR-7) arrival sparked much excitement, including hopes of reestablishing the species in California after more than 80 years of extirpation and fears of conflict with livestock, hunting, and public safety.

The California Department of Fish and Wildlife (CDFW) is drafting a California Wolf Plan as wolves recover in adjacent western states and the possibility of wolves crossing into California becomes a reality. The plan is being drafted collaboratively with input from a wolf Stakeholders Working Group. This working group consists of representatives from the livestock industry, wolf conservation and advocacy, hunting, and organizations advocating science-based decision-making. The Western Section is an active participant in the Stakeholders Working Group

CDFW is currently seeking recommendations from the stakeholders for peer-reviewers of the plan. In particular, experts in predator-prey dynamics and specifically wolf-ungulate-livestock interactions are sought. Compensation may be available for review time. If you have this expertise or have a recommendation, please contact [Linda Leeman](#) or [John McNerney](#).

and in the Wolf Conservation Objectives subgroup. CDFW envisions the California Wolf Plan as a guiding document to help facilitate the reestablishment of self-sustaining wolf populations in California. The plan will also recognize and work to minimize wolf versus human conflicts. CDFW staff has done a commendable job engaging the various stakeholders. Needless to say, there are strong opinions from both sides of the discussion and no California specific wolf research to guide the effort. Assuming that the plan stays on schedule, a draft is expected to be released later this summer and CDFW will be soliciting public comment.

In March 2012, the California Fish and Game Commission (Commission) received a petition to list the gray wolf as Endangered under the California Endangered Species Act (CESA). The petition was unique in that the species had been extirpated from California, was largely triggered by the temporary presence of OR-7 in the state (since returned to Oregon), and relied heavily on research data from other states. The Commission accepted the petition, initiating a review of the species' status.

CDFW completed the status review in February of 2014, recommending that the gray wolf not be listed under CESA. CDFW cited several reasons for this recommendation including lack of California specific research on gray wolf, CESA criteria, regulatory factors, and challenges revolving around the fact that the

(McNerney, cont'd on page 6)

(McNerney, cont'd from page 5)

species was previously extirpated. The following excerpt from the CDFW Director's memo to the Commission helps to exemplify these challenges:

“In the Department's experience to date, CESA has been historically employed to address scientific scenarios where a population of a species is present in the state but is in a downward trend to extinction. The law has yet to encounter the reverse, which is to say a species population has been extirpated but now may be reestablishing in the state on an upward trend to recovery. It is unclear whether the architects of CESA contemplated such a future. The gray wolf situation has forced the Department to deliberate internally and explore these many nuances of law, policy and wildlife management. Personally, this deliberative process forced me to grapple with the confluence of these issues. We are still thinking about these issues. Yet, the listing process requires that firm timelines be met.”

The Commission is expected to discuss and take action on the recommendation in April, 2014.

While CDFW does not believe that current circumstances warrant listing of the gray wolf under CESA, they acknowledge the conservation value of the species' return and associated management challenges.



*Minam wolf pack, Wallowa County, OR.
Photo Courtesy of ODFW*

Membership Services

Don Yasuda

How quickly time flies by. Hard to believe it's already March. Some of you reading this newsletter may have missed your renewal notice for your Section membership. Years ago, the Section decided that we would not restrict this newsletter to only current members because we believe the information benefits all wildlife professionals and students within the Section. However, the professional development and other services that the Section provides depend upon a strong and ideally growing budget, and member dues makes up an important part of our annual income. By my accounting, about 360 members have Section memberships that expired between September and February but have not renewed yet. If you are one of those individuals, I will send out reminders soon as I'm sure that since you're reading this newsletter, you appreciate the value of the Western Section and want to help ensure we continue to provide important benefits to members. There are many hundreds of other who were members from years past who also remain on our email list and we hope you will consider re-joining.

Some of you appear to have let your TWS membership lapse as well as your Section membership. About half of our current membership only belongs to the Section and maybe a Chapter. If that's you, I invite you to explore the benefits of also joining TWS at the national level. Beyond receiving the award winning member magazine, *The Wildlife Professional*, you'll support the government affairs work that TWS does on your behalf at the national and international level. TWS membership offers many other benefits. Check out the website or get in touch with me to learn more.

To the 662 of you who have current memberships, thank you for continuing to support the Western Section. As a reminder, the Section currently uses our Yahoo Groups site, TWSWSMembers, to share official information and announce Section events. If you are not currently subscribed, send an email to twswsmembers-subscribe@yahoo.com, visit the group at <https://groups.yahoo.com/neo/groups/TWSWSMembers/info> or contact me to get set up. We are exploring alternatives to Yahoo Groups and will keep you notified if we change in the future. If you have questions about your Section membership, please contact me at dyasudaTWS@comcast.net.

(Bell, Continued from Page 4)

My professional responsibilities keep me busy. For example, there is no shortage of things that need to be done to reduce bird kills in the Altamont Pass Wind Resource Area. The photo on page 4 was taken while I was engaged in fairy shrimp surveys with Dr. Jamie Kneitel of California State University, Sacramento. We came upon this wounded red-tailed hawk in a draw beneath a newly repowered wind farm (one with fewer, larger, mega-wind turbines). This red-tail unfortunately had to be put down due to extensive blunt force trauma to its right wing. Once again, I was confronted by the dilemma of working to reduce wind farm avian kill rates to sustainable levels for a given population, but realize that individual birds will continue to be lost no matter what we do. I guess the answer to this conundrum can be embodied in the three "R's": reduce, reuse, recycle. For energy consumption, that would be the first "R".

I look forward to continuing to serve The Western Section as Past-President in 2014. As always, please feel free to contact me or any other Board member to voice your concerns, ideas or just talk about our Section. Thank you for your participation in all things "Western Section".



*Student Weekend at Sagehen Field Station
Snow Tracking Workshop
Photos by Nicolette Murphy*

Donate to the Western Section Endowment Fund

The Donaldson Endowment Fund was established in 2007 with a \$38,000 bequest from the estate of Section member Douglas Donaldson.

Interest generated from the fund is used to support the Section's education, outreach, and scholarship programs.

The Endowment Fund principal receives input from all bequests, life membership dues, and donations specifically made for the fund.

Please consider adding to the Endowment Fund by making a donation or becoming a Lifetime Member of the Section. Donations to the fund are tax-deductible. A lifetime membership is only \$450, which may be paid in up to three installments.



*Student Weekend at
Sagehen Field Station
Snow Tracking Workshop
Photo by
Katie Moriarty*



TWS Western Section Annual Meeting 2014... A HUGE Success!

- 586+ Annual Meeting Attendees (over 100+ Students)
- 253+ Pre- and Post- Meeting Symposia/Workshop Attendees
- 24+ Sponsors & Exhibitors
- 19+ Associated Meetings & Workshops
- 125+ Concurrent Sessions, 25+ Posters, & 19+ Session Chairs
- 7 Plenary & 6 Keynote Speakers
- \$3,000+ Donated to the Great Basin Institute -
Carbon Footprint Reduction Award

Thank you to our 2014 Annual Meeting Chair

Natasha Dvorak

and to the 40+ Planning Committee members
who worked so hard behind the scenes
to make this event happen.

Save the date...

2015 Annual Meeting

January 28-30, 2015

Santa Rosa Hyatt Vineyard Creek
Hotel & Spa



The following awards were presented at the TWS-WS Awards Banquet....



The **Raymond F. Dasmann Award for the Professional of the Year** was presented to **Shawn Espinosa with the Nevada Department of Wildlife (NDOW)**. Shawn began his wildlife career over 20 years ago and over these years he has held a number of positions that prepared him for the professional challenges he faces today. Over the last decade that the Greater sage-grouse (GSG) issue has grown to become a national focus, Shawn has distinguished himself as a leader and a subject matter expert, not only in Nevada and the Great Basin, but nationally as well. Since the USFWS found the GSG “Threatened But Precluded” in 2010, Shawn not only took the lead in Nevada by developing critical information on GSG conservation and management, he has been asked to serve on critical scientific initiatives, and committees to draft the quintessential reports and biological assessments that are driving the scientific discussion critical to the GSG listing evaluation.

The **Conservationist of the Year Award - This year we are very pleased to honor the Nevada Bighorn Unlimited (NBU)** for their unwavering support of wildlife conservation in Nevada, through their direct financial support, volunteerism and policy and political support. NBU was formed in 1981 by a group of private sportsmen with the goal of reintroducing bighorn sheep back into their historical mountain ranges. Bighorn sheep were Nevada’s most numerous big game species when white man first entered the Great Basin. However, by 1900 they were almost extirpated due to over-exploitation during settlement of the west. By forming a strong partnership with the Nevada Department of Wildlife, the reintroduction of bighorn sheep into Nevada mountain ranges has become one of the world’s greatest wildlife conservation success stories.



The **Barrett A. Garrison Outstanding Mentor Award. This award was bestowed upon Dr. Jim Sedinger.** Dr. Sedinger started at University of Alaska, Fairbanks in 1985 as an Assistant Professor and earned tenure in 1994. He has taught at the University of Nevada Reno since 2001 where he received several awards including the Researcher of the Year in 2012. He has encouraged many students and helped them develop outside relationships to interact with many other projects not related to their graduate work, which offered the benefit of preparing them for work

in the real world. Many of his students firmly believe they could not have received better mentoring from anyone else and Dr. Sedinger has been one of those mentors to many students and colleagues over the years.

The Chapter of the Year Award went to the San Francisco Bay Area Chapter. 2013 was a very busy year for the San Francisco Bay Area Chapter and they continue to offer a diversity of activities that facilitate social networking, professional development, and involvement in the broader Wildlife Society organization. In addition, they assisted students at the San Francisco State University and University of California at Berkeley to establish the first two student chapters in the San Francisco Bay Area.



The James D. Yoakum Award was presented to Dr. Donald A. Klebenow. The

Nevada Chapter was a relatively small group of professionals, and as a result, each member had

multiple responsibilities. As an example, during 1986, when Don was serving as Chapter Past President, he was also serving on the Chapter Nominations, and Resolutions and Public Statements Committees, and as Chapter historian. During the 1970s and 1980s, the Chapter produced position statements on lead shot, horse and livestock grazing impacts on wildlife, the sagebrush rebellion, effects of airspace use by the Navy on wildlife, inclusion of Anaho Island in the national wilderness system, wilderness as a wildlife management tool, wilderness on Sheldon National Wildlife Refuge, water for the Lahontan Basin and Stillwater National Wildlife Refuge, a trout fishery at Chimney Creek Reservoir on the Little Humboldt River, and the Red Rock Canyon Recreation Area. The Chapter also commented on numerous other wildlife management issues, including the draft EIS for the Lake Meade National Recreation Area and produced the Silver Wildlife Series, which became a popular educational tool during this period. Don and Jim Yoakum were active in nearly all of these efforts.

Don's loyalty and commitment to the Nevada Chapter and the Western Section

were key to the success the Chapter and Section achieved over more than two decades.



The following TWS members received a past-presidents pin for service to the Western Section at the annual business meeting:

- **Linda Leeman**, Past-President 2012

The following TWS members received plaques for their service to the Western Section at the annual business meeting:

- **Doug Bell**, President 2013
- **Natasha Dvorak**, President-Elect 2013
- **Laura Patterson**, Sacramento-Shasta Chapter Representative 2011-2013
- **Don Yasuda**, Section Representative 2007-2013
- **Linda Connolly**, San Joaquin Valley Chapter Representative 2011-2013
- **Janine Payne Schneir**, Secretary 2010-2014



Non-Invasive Acoustic Monitoring of Bats
May 2 - 5, 2014
Yosemite National Park
& Midpines, California
Madera County

Instructor:
Joe Szewczak, Ph.D.,
Humboldt State University
& SonoBat developer



Registration (* Does NOT include meals/lodging):
\$400* Members of Western Section
\$435* Non-Members of Western Section
\$485 Members w/ Dorm (meals additional)
\$100* Student/Early Career w/ Dorm (meals additional)
*Limited to 3, see qualifications



Program Director: Cynthia Perrine,
perrine.cynthia@gmail.com

For details, schedule,
and to register, visit

The Western Section of The Wildlife Society
www.tws-west.org



11th Annual!
Bat Ecology & Field Techniques
May 29 – June 1, 2014
San Luis Obispo County
Chimineas Ranch,
California

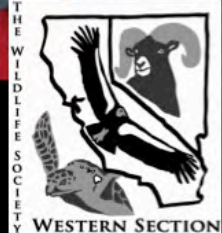
Instructors:
 Dave Johnston, Ph. D.
 H.T. Harvey & Associates
 Joe Szewczak, Ph. D.
 Humboldt State University


Registration (Includes meal/lodging):
 \$520 Members – Western Section
 \$555 Non-Members
 \$200 Student/Early Career*
 *limited to 5 , see qualifications

Program Director: Cynthia Perrine,
 perrine.cynthia@gmail.com

For details, schedule,
and to register, visit

The Western Section of The Wildlife Society
www.tws-west.org





Conservation Affairs Committee

Erin Aquino-Carhart

The Conservation Affairs Committee (CAC) held a meeting at the 2014 Annual Meeting. Although we had only a handful of attendees, it was a good group. I really appreciate those of you who stuck it out until Friday afternoon to attend the meeting! We had the pleasure of having Terra Rentz, our former TWS National Government Affairs Deputy Director, to participate in our meeting and provide guidance for conservation advocacy. I gave a presentation on the basics of CAC and an introduction to the newly formed Conservation Affairs Network (CAN). Afterwards, we had a group discussion on our conservation priorities within the WS, the challenges that some chapters may have to participate in CAC, and the guidance that I and the CAN provide for chapter-level CACs. I was very happy with the enthusiasm and support of the CAN from the attendees and cannot wait to further develop our efforts within the WS. If you're interested in learning more about the CAC or the CAN, please contact me. I can host a webinar presentation and discuss the CAC with your chapter.

Chapter-Level CAC

Sacramento-Shasta and San Joaquin Valley Chapters will be testing the water with ad hoc CACs, and, depending upon their success, may become official committees. I would like to acknowledge Melinda Bradbury and Eric Stitt from Sac-Shasta Chapter and David Davis from San Joaquin Valley Chapter for taking the initiative and developing these ad hoc CACs.



Did you know?

TWS-WS Grant Money is Available to Members

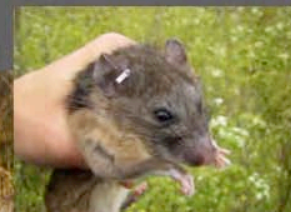
In pursuit of the objective to encourage high standards of professional achievement, the Western Section has established an honoraria fund to assist participation in professional meetings, conferences, symposia and other continuing education activities.

Additionally, each year The Wildlife Society-Western Section makes funds available to students to encourage their participation. These funds can be used for partial reimbursement of transportation, lodging, registration and meal expenses. Travel grants of up to \$300 will be awarded to a limited number of students.

For more information visit our website at:

<http://www.tws-west.org/grants.php>

Western Section Field Camp/
Field Vertebrate Zoology (Cal Poly S329)
June 16 - 27, 2014
Swanton Pacific Ranch
Santa Cruz County,
California



Instructors:
John Perrine, Ph.D.,
Cal Poly State University
& Western Section Wildlifers
representing State & Federal
Agencies, Tribal Lands, Non-
Profit Organizations, and
Private Industry



Program Director: Cynthia Perrine,
perrine.cynthia@gmail.com

CAL POLY
SAN LUIS OBISPO

Registration*:
Students/Early Career Professionals
register directly with Cal Poly
Extended Education: (805) 756-2063

*Includes 4-quarter units University Credit!

Professional Development Committee

Rhys Evans



Wildlife Disease Investigation Practical Workshop

Our 60th Anniversary Celebration meeting in Reno included several successful workshops, both before and after the main meeting. Though more graphic photos were taken, some would require that thing your grandparents may have called “intestinal fortitude” – but in a literal sense. Among the mild photographs, participants shown here are

observing a laboratory demonstration.



The Professional Development Committee would like to thank Peregrine Wolff and Deanna Clifford, along with a great team of assistants and co-instructors. This workshop was intended to only scrape the surface...and THEN “dig in.” And it definitely succeeded!

Other really successful events in Reno:

- Greater Sage Grouse Symposium. Thanks to Dan Gibson of UN Reno! We had a strong contingent of speakers present their work and opinions. It's quite true that one of the speakers was somewhat “incendiary,” but to be honest, that was intended. Otherwise, good discussion, cooperation and information exchange definitely occurred, as evidenced by our evaluations.
- Two different wildlife tracking events were presented; both were headlined by one of Natasha's plenary speakers, David Moskowitz. We might have unintentionally and slightly misrepresented the nature of the full-day event, but again, evaluations overall provided outstanding appreciation. We're already planning on doing this one again.
- Wilderness First Aid was once again offered; filled up and was well received! Thanks to Bobbi Foster for presenting this event for the third time!

Thoughts for Santa Rosa (as well as before and after that):

We are thinking about a few possibilities, an e-mail to your chapter representative or the PDC chair (sirsname “at” Verizon “dot” net) would help your voice be heard!

We presented “ESA Section 7” in 2013, Sacramento. Who would be interested in Sections 4 and 10 in Santa Rosa? (for those who don't know, we think Sections 4 and 10 would go together rather well). That would include Critical Habitat, Safe Harbor and Recovery Permits (and related topics). Please note that I asked more or less this same question in the last newsletter and got ZERO responses.

Another intriguing idea, perhaps sourced partially from the Reno “Ecology and Conservation of Mustelids” session, what would members think about some variant of “Marijuana Cultivation – Effects on Wildlife and Wildlifers”??

So Cal Chapter

Jeff Lincer



The TWS SoCal Chapter hosted 4 recent and successful events, including a well-attended Fairy Shrimp Workshop in late March and several social gatherings for Chapter Members and their families at local breweries.

The SoCal Chapter was well-represented at the 2014 Annual TWS Western Section Meeting in Reno, NV and we were delighted to participate in both the Breakfast Roundtables and the Student-Professional Lunch. We also hosted a well-attended Chapter meeting, with pizza and beer playing a prominent role, and a good time was had by all!

The near-future holds the following:

- Date(s) TBD: Servicing our Chapter members in the northern portions of our chapter boundaries continues to be a priority. In response to this need, we are planning a multi-location event for Orange County, Los Angeles, Riverside, San Bernardino, and Imperial Counties. We are looking for volunteers to be the contact “chair” at the county/region level to help plan events. Please email us if you are interested, and/or if you know of an office space that might be willing to host a social get together with local chapter members (JeffLincer@gmail.com).
- April 18th and 19th: Arroyo Toad Workshop. This lecture and field workshop will be led by Ed Ervin, Andrew Borchert, and Melissa Busby. The lecture will be held at Mission Trails; field location is to be determined. We will send out more information on how to register for this event as we finalize the details.

Other upcoming events include: lectures on General Insects, Raptors, and other wildlife; a lecture and field day viewing migrating birds; and, perhaps, workshops on Mohave Ground Squirrel Survey and Handling and Vernal Pool Invertebrates. The chapter is also exploring possible camping trips on the Channel Islands and the Mojave NP.

The SoCal Chapter membership now exceeds 110. We provide a sign-up opportunity at every Chapter function. Interested in becoming a Chapter Member? Please join us and/or contact our Chapter Membership Chair, Wendy Loeffler at wloeffler@recon-us.com.

Interested in getting involved in the chapter events? Please contact our Event Coordinator, Callie Ford at cford@dudek.com.

Central Coast Chapter

Wendy Knight

The Central Coast Chapter hosted a Wildlife Symposium on February 28, 2014. We had a great turn out of about 50 local professionals from Santa Barbara, San Luis Obispo and Monterey Counties. Contact Wendy Knight at wmfknight@gmail.com for information on future Chapter meetings.



San Joaquin Valley Chapter

Jeff Davis

The San Joaquin Valley Chapter is standing strong with 210 active members. The Chapter just wrapped up a Natural Communities Conference which they organized in late March in Bakersfield, CA. They are currently planning a symposium on urban ecology which will be held in the fall of 2014 in Fresno as well as a botany workshop which will focus on plants in the southern San Joaquin Valley which is planned for April 2015.

The Chapter had a productive financial year in 2013 due to several successful workshops and as a result they were able to make sizable donations

to Working Dogs for Conservation, California Living Museum, and the Buttonwillow Ecological Reserve. The Chapter also provided three grants to cover costs for registration, travel and lodging for students and new professionals to attend the Western Section Annual Conference in January.



- + Information, including our most recent newsletter, can be found on our [website](#)
- + We also have a [Facebook](#) page
- + And a [Yahoo! Groups discussion forum](#)



Sac Shasta Chapter

Hal Holland

Sacramento-Shasta Chapter has been very busy since the end of 2013. We wrapped up the year with a sold-out annual winter mixer at local art

gallery 21Ten; the event is jointly put on with the American Planning Association and the Association of Environmental Professionals. In early January we hosted an open meeting of the membership to find out more about Chapter Board Positions and volunteer for Board or Committee positions. Twenty five people attended, and all positions are filled for 2014! The Chapter meeting was well attended at the

Western Section conference, chapter merchandise (such as pint glasses) was a big seller, and we had positive inter-chapter discussions to increase collaboration. A follow-up board meeting was held in early February.

Upcoming events include a much anticipated Swainson's hawk classroom and field skill workshop starting April 17th.

The Chapter maintains a strong financial standing, and membership numbers are holding at approximately 170 individuals. We are expanding our membership coverage with a liaison in northern California to facilitate connection and events for folks in the "Shasta" portion of our region. We are also maintaining a strong integration with the UC Davis Student Chapter, including a professional mixer later this Spring.



UC Santa Barbara

Joseluis Ocaranza

The mission of The Wildlife Society at UCSB is to promote wildlife-based stewardship among students by educating about past and present wildlife and environmental issues, participating on projects in the field, exploring local natural habitats, and inspiring individuals to enhance their ecological responsibility.

The UCSB Chapter has had an action packed spring season. They have already hosted over 12 activities since January! Just to name a few: Southern California Threatened and Endangered Species presentation; Habitat Restoration Field Day at Coal Oil Point Reserve, Channel Islands Restoration Project at Refugio State Beach; Presentation on Careers and Internships in Wildlife; Hike up Tunnel Trail; Presentation on CA Tiger Salamander; Presentation on International Issues Concerning Wildlife; Big Horn Sheep Census with USFWS; Night Hike up Figueroa Mountain; and a Creative Lecture Series Presentation on the California Condor.

And, of course, there are several exciting activities on the calendar for the spring quarter. Contact Joseluis Ocaranza for more information: j_ocaranza@yahoo.com



Photo by Bill Stagnaro

Nevada Chapter

Mackenzie Jeffress

Introducing our new Chapter Representative Mackenzie Jeffress. Mackenzie is a wildlife diversity (nongame) biologist with Nevada Department of Wildlife out of Elko. Before joining NDOW, Mackenzie spent several years working with the University of Idaho and National Park Service on research and monitoring of the American pika in nine national park units. Mackenzie received dual bachelor's degrees from the University of Idaho in 2005 and her master's degree from Kansas State University in 2009. She is a 2010 alumna of the TWS Leadership Institute and is looking forward to helping reinvigorate the NV Chapter and get involved with the Western Section.

We are excited to announce that the Nevada Chapter of The Wildlife Society is up and active again! We had a chapter meeting at the Western Section Annual Meeting in Reno January 2014. There was a fantastic turnout of over 40 people, and new officers were elected at that time. Our new officers are Ken Mayer (President), Chris Nicolai (President – Elect), Derek Hall (Secretary/Treasurer), Mackenzie Jeffress (Chapter Representative to the Western Section), and Pete Bradley (Conservation Affairs). We are developing our first newsletter, which is scheduled for distribution this May, as well as updating our website. Furthermore, we are hoping to plan a workshop and/or symposium to be held sometime in 2015. Currently our focus is on improving communication with our members and increasing our membership base and involvement.

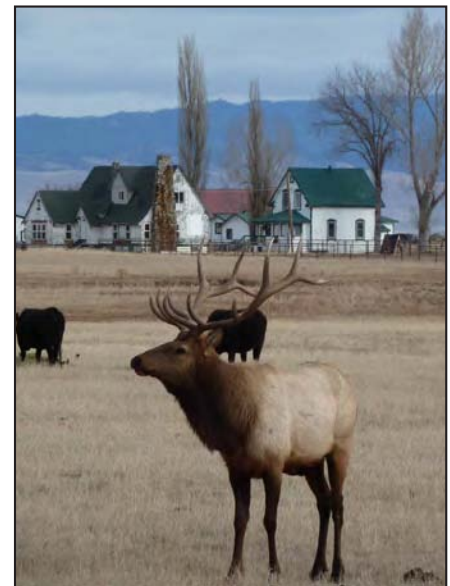
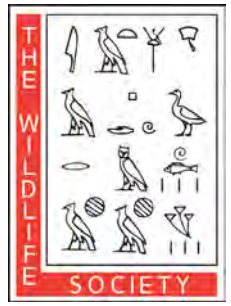


Photo by Eveline Larrucea



NOW ACCEPTING PAPERS FOR THE WESTERN SECTION'S NEW JOURNAL

WESTERN WILDLIFE



Please consider submitting your manuscripts to the Western Section's new journal, *Western Wildlife*, formerly known as the *Transactions of the Western Section of the Wildlife Society*.

Western Wildlife is an open-access, peer-reviewed journal that publishes original research, reviews, perspectives, and correspondence on the ecology, natural history, management, and conservation biology of animals.

Submit materials to David Germano at

dgermano@csu.edu

Papers will be peer-reviewed and then published on-line once accepted by the editor

Visit the Western Section's website for updates

<http://www.tws-west.org/>



Western Wildlife 1:1-7 • 2014
Submitted: 1 October 2013; Accepted: 5 December 2013

SEASONAL SPATIAL PATTERNS OF TWO SYMPATRIC FROGS: CALIFORNIA RED-LEGGED FROG AND AMERICAN BULLFROG

DAVID G. COOK¹ AND ANDREA F. CURRYLOW²

¹Environmental Resources, Sonoma County Water Agency, 404 Aviation Boulevard, Santa Rosa, California 95403, USA,
e-mail: dcook@scwa.ca.gov

²Purdue University, Department of Forestry and Natural Resources, 715 W. State Street,
West Lafayette, Indiana 47907, USA

Abstract.—The introduced American Bullfrog (*Lithobates catesbeianus*) has been implicated in the decline of native amphibians. Bullfrogs have become widespread in California and are a threat to the native California Red-legged Frog (*Rana draytonii*). The two species are ecologically similar, and the bullfrog is a predator to the red-legged frog that may influence its habitat use patterns. We analyzed the spatial and temporal locations and body sizes of both frog species within a large, fishless seasonal marsh during 1996. Overall, California Red-legged frogs and American Bullfrogs showed similar spatial distributions; however, seasonal changes were observed. California Red-legged Frogs increased their mean distances between conspecifics in the marsh seasonally from winter through summer while frog numbers decreased. In contrast, bullfrogs showed the opposite pattern where mean distances between conspecifics decreased over time, but the abundance of bullfrogs increased from winter through summer. During each season the mean distances between red-legged frogs and bullfrogs were greater compared to distances to their respective conspecifics, except for spring when bullfrog conspecifics were slightly more distant than red-legged to bullfrog distances. American Bullfrogs were significantly larger than California Red-legged Frogs at our site. Our findings suggest that frog abundance, which is strongly influenced by breeding behavior, changing habitats, and possibly predation risk of red-legged frogs by bullfrogs are the dominant factors driving the spatial patterns observed at Lodon Marsh. Also, once winter breeding was completed, California Red-legged Frogs seemed to avoid predation by American Bullfrogs by spatial separation within the marsh or by leaving the marsh altogether.

Key Words.—amphibians; distribution; *Lithobates catesbeianus*; predator avoidance; *Rana draytonii*; size

INTRODUCTION

Unlike most birds and reptiles, ecologically similar species of amphibians have been found to overlap spatially more often than expected at random (Hofer et al. 2004). This spatial overlap is likely due to limited resources such as breeding ponds (following the resource tracking hypothesis), suggesting that resource effects override direct interspecific competition or predation (Hofer et al. 2004). However, ecologically similar species should spatially partition the use of these resources at a microhabitat scale if predation, in fact, influences amphibian assemblages (Sredfi and Collins 1992).

The American Bullfrog (*Lithobates catesbeianus* [=*Rana catesbeiana*]) is native to eastern North America and are among the largest amphibians on the continent (Bury and Whelan 1984). Adult bullfrogs are a gape-limited, sit-and-wait predator that can take relatively large prey (Bury and Whelan 1984). Within their native range, bullfrogs play an important role in structuring amphibian assemblages through intraspecific predation and competition (Werner 1994; Hecnar and M'Closkey 1997).

In its introduced range, the American Bullfrog has been implicated in the decline and extirpation of many native ranid frogs (Licht 1974; Nussbaum et al. 1983; Hayes and Jennings 1986; Kiesecker and Blaustein 1997; Kupferberg 1997; Rosen and Schwalbe 2002) and is an invasive species in the western United States (Meshaka 2005). In California, American Bullfrogs were first in-

troduced in 1896 (Jennings and Hayes 1985) and now occur throughout the state except in desert and alpine areas. American Bullfrogs are known to prey on a variety of native aquatic and terrestrial vertebrate species in their introduced range (Bury and Whelan 1984; Wu et al. 2005; Govindarajulu et al. 2006), including the California Red-legged Frog (*Rana draytonii*) federally listed as threatened (Moyle 1973; Cook and Jennings 2001; Cook 2002). The California Red-legged Frog and American Bullfrog are ecologically similar. Both frog species are highly aquatic and mainly nocturnal (Lannoo 2005; Stebbins 2003; Storer 1925; pers. obs.). Maintaining endangered species populations where the invasive bullfrog is established is challenging, but is imperative for conservation efforts.

Seasonality of available habitat and animal activity play important roles in spatio-temporal frog assemblages (Kopp and Eterovick 2006) and may contribute to the persistence of red-legged frogs despite the predatory effects of the larger bullfrogs (Adams et al. 2011). Nonetheless, seasonal variation in activity of the California Red-legged Frog (e.g. breeding phenology) along with spatial distributions has not been assessed in the presence of American Bullfrogs. Complex interactions between pond breeding species are often difficult to discern, but microcosm experiments have elucidated some of these interactions (Luckinbill 1973; Morin 1986; Wilbur 1987; Kiesecker et al. 1998; Hero et al. 2001). However, few studies have examined this in a natural field setting. The



photo by H. Clark

Polarization: To Kill or Safeguard Wolves

Written by Jeanne Chinn

In January, 2012, I attended a California Rangeland Coalition Science Summit. I appreciated hearing about the many activities undertaken by ranchers involving better grazing management, which protect their lands for future generations and provide environmental benefits as well.

At the end of the Summit, a guy stepped up to the podium and asked the audience, “Anybody got a gun out there? I’m from Lassen County, and I hear we have a wolf in our county!” Everyone laughed and clapped. I was shocked and wondered why they were so happy about the idea of putting a gun to a lone wolf that couldn’t even breed, when we had 26,000 bears in our state and 5-7,000 mountain lions. OR7, the infamous single dispersing male from the Imnaha pack in Northeastern Oregon had just set his paws in our state for the first time, a mere 3 weeks prior to the Summit.

Huey Johnson, former U.S. Secretary of Resources and environmental activist, is my former employer, mentor and friend. He taught me to look for gaps in sustainability, and then seek ways to close the gaps. The Summit provided a firsthand view of a very obvious gap. I call it the historical, hysterical, fear-based mythology of wolves. This fear-based belief has plagued wolves since medieval and ancient times when they were associated with evil, or destruction from their predatory nature, making them the symbol of the warrior. This fear, and warrior bravado has been juxtaposed in modern times where many sports teams have wolves as their team name, or mascot.

With the entrance of OR7 into California, polarization of how wolves are viewed has come home full circle. The California Farm Bureau knows that wolves are dangerous predators and, ‘Who’s Afraid of the Big Bad Wolf?’ is rightfully illustrated in Disney’s Three Little Pigs story. The Farm Bureau has heard plenty from the

Northern Rocky Mountain states about how wolves go after more than little pigs when it comes to livestock. Wolves would be yet another bane to their already stretched budgets from land management costs, the craziness of drought, as well as other unpredictable climate changes.

Meanwhile, the legal process of CESA listing for wolves was set into motion within 2 months of OR7’s first visit to California by environmentalists eager to provide wolves a safe opportunity to disperse and resettle onto available historical territories. This listing is especially important given that continued federal listing is tenuous at best.

Listing of species in California is not a quick process, does not happen often, and many species that are frightfully declining in numbers are waiting for listing consideration. Yet this relatively minor biological event of a lone wolf dancing between two state borders, has evoked newspaper headlines and prompted public meetings. It has also taken considerable time and expense for stakeholders to collaboratively develop a wolf management plan, including efforts for and against listing.

OR7s’ presence has brought to the forefront how wolves are viewed elsewhere. Hunters were very upset when elk numbers began to decline in Yellowstone after wolves were reintroduced. Dr. Doug Smith, head of reintroduction in Yellowstone, set the record straight by saying that in 2008, wolf and elk numbers reached equilibrium and Yellowstone has all the ecological benefits of a naturally balanced ecosystem. The Park was never intended to be an elk farm.

Wolf advocates point out that our public lands belong to everyone; it’s where wolves naturally belong and lived in dynamic equilibrium without human

(Chinn, cont’d on page 30)

(Chinn, cont'd from page 20)

management for over 600,000 years. Top predators are integral to healthy ecosystems, exercising influence far out of proportion to their numbers by regulating other predators and prey all the way down to the grasses. However, livestock leases have been procured on public lands and this provides another point of friction. How to protect livestock, as well as having healthy ecosystems including wolves, and other top predators, takes effort, tolerance, and respect from everyone involved.

LINK to Complete Article <http://www.beingwithwolves.org/knowledge/polarization-kill-or-safeguard>

In response to her perceived gap in sustainability for wolves, Jeanne created Being With Wolves, a California Wolf Education Project, which provides information to the public on science-based opinions. You are welcome to support the project financially, through volunteering, or providing presentations in your home county. For further information please contact Jeanne at Jeanne@beingwithwolves.org or www.beingwithwolves.org



Photos courtesy of wildlife photographer Dan Hartman
<http://wildlifealongtherockies.homestead.com/>

2014

Upcoming Events

- April 17** Swainson's Hawk Classroom & Field Skills Workshop. Hosted by Sac-Shasta Chapter
- April 18-19** Arroyo Toad Workshop. Hosted by So Cal Chapter
- April 26** TWS-WS Board Meeting (open to all members). 11am-5pm, Sonoma County Water Agency
- May 2-5** Noninvasive Monitoring of Bats. Yosemite National Park
- May 29-June 1** Bat Ecology & Field Techniques. San Luis Obispo County, Chimineas Ranch.
- June 16-27** Field Vertebrate Zoology. Santa Cruz County, Swanton Pacific Ranch.
- October 25-30** TWS Annual Meeting. Pittsburgh, PA.

2015

- January 28-30** TWS Western Section Annual Meeting. Santa Rosa, CA.
- October 17-21** TWS Annual Meeting. Winnipeg, Manitoba.
- July 2015** 5th International Wildlife Management Congress. Sapporo, Japan

Humboldt State Mentorship Program to Help Military Veterans Transition into STEM Careers

A wildlife graduate student and military veteran is creating a mentorship program at Humboldt State University to help veterans transition to successful careers in the science, technology, engineering, and math (STEM) fields. The program will be structured such that graduate students who are veterans will mentor undergraduate veterans in their departments as well as closely aligned fields that do not have representative veterans as graduate students. This is starting with the Wildlife Department at HSU for the initial scoping and pilot phase and will be expanded as the direction of the program becomes better established. The National Science Foundation has identified veterans as an underrepresented group in the STEM fields and this program aims to address and help correct this issue. Currently, any information germane to this topic that could be shared would be greatly appreciated. This could range from knowledge of unique opportunities for funding or research available to veterans, experiences hiring veterans (both good and bad), personal experiences in making this transition, or anything that the reader feels would be of use. Any comments, questions, or advice can be directed to Ryan Baumbusch via Ryan.Baumbusch@humboldt.edu.



The Wildlife Society Western Section

P.O. Box 6756
Albany, CA 94706

<http://twswest.org>

This newsletter is published three times a year:

April 15, August 15 and December 15

Contributions are due 30 days prior to each publish date.

Officers:

President

Natasha Dvorak
Environmental Science Associates
(707) 795-0937
ndvorak@esaassoc.com

Past-President

Douglas A. Bell
East Bay Regional Park District
dbell@ebparks.org

President-Elect

Don Yasuda
USDA Forest Service
dyasudaTWS@comcast.net

Section Representative

Cynthia Perrine
perrine.cynthia@gmail.com

Treasurer

John McNerney
City of Davis
JMcNerney@cityofdavis.org

Secretary

Janae Scruggs
CalEPA
jscruggs@tidepool.com

Staff:

Program Director

Cynthia Perrine
perrine.cynthia@gmail.com

Webmaster

Eric Renger
eric.renger@gmail.com

Project Manager

Candace Renger
(510) 684-8590
candace.renger@gmail.com

Bookkeeper

Michael Chapel
mike.chapel@yahoo.com

Chapter Representatives:

California Central Coast

Wendy Knight
wmfknight@gmail.com

California North Coast

Lisa Ollivier
US Forest Service
lollivier@fs.fed.us

Hawaii

Rachel Sprague, NOAA National
Marine Fisheries Service
rachel.s.sprague@noaa.gov

Nevada

Mackenzie Jeffress
Nevada Department of Wildlife
mrjeffress@ndow.org

Sacramento-Shasta

Hal Holland
Westervelt Ecological Services
hholland@westerveltecolgicalser-
vices.com

San Francisco Bay Area

Matthew Bettelheim
URS
Matthew.Bettelheim@urs.com

San Joaquin Valley

Jeff Davis
Colibri Ecological Consulting
jdavis@colibri-ecology.com

Southern California

Jeff Lincer, Researchers Implement-
ing Conservation Action
jefflincer@gmail.com

UCSB Student Chapter

Joseluis Ocaranza
j_ocaranza@yahoo.com

UC Davis Student Chapter

Cortney Rebholtz
cfrebholtz@ucdavis.edu

Humboldt State

Student Chapter
Andrew Wiegardt
andrewwiegardt@yahoo.com

University of Nevada Student Chapter

Alex Clarke
alclarke4679@gmail.com

Cal Poly San Luis Obispo Student Chapter

Brooke Wainwright
bwainwri@calpoly.edu

Committee Chairs:

Newsletter Editor

Debra Hawk
dhawk@schat.net

Awards and Grants

Richard Burg
CA Dept. Fish and Wildlife
richard.burg@wildlife.ca.gov

Conservation Affairs

Erin Aquino-Carhart
CA Dept. Fish and Wildlife
erinaquino@gmail.com

Membership

Don Yasuda
dyasudaTWS@comcast.net

Professional Development

Rhys Evans
sirsname@verizon.net

Student Affairs Committee

Mandi McElroy
mandi.mcelroy@gmail.com

Jena Epperson
jee116@humboldt.edu

David Wyatt
wyattd@scc.losrios.edu

Historian

Vacant